

Please scan the QR code below to access  
an electronic version of this booklet



# Tracks & Trails & Trains

**Walk start location:** *Wirksworth Train Station*

**Walk distance:** *3.4 km / 2.1 miles*

**Where to park:** *Ecclesbourne Valley Railway,  
Wirksworth Station, Station Road, Coldwell Street,  
Wirksworth, Derbyshire, DE4 4FB*

This Tracks, Trails and Trains  
walk booklet belongs to:

---

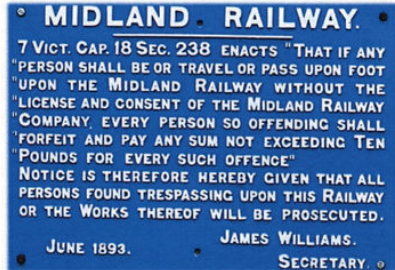
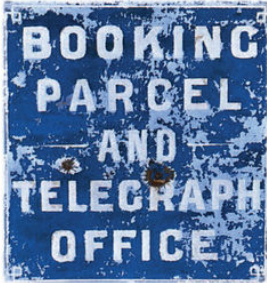


EMR



**RAIL SAFETY RULE:** Never play near railway tracks and never throw anything at trains.

On your journey around the walk route how many of these things can you spot?



Black Rocks



Words are **ABSOLUTELY AMAZING**

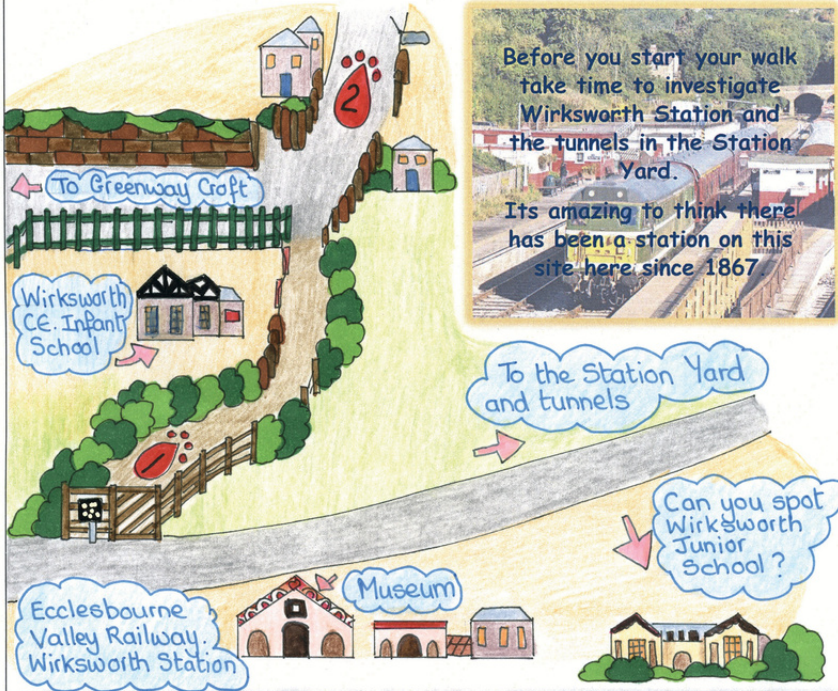
Around the edge of pages in this booklet you will notice some unusual words. Before you turn each page to find out the meaning of the word see if you can guess what it means.

**GOOD LUCK**

**RAIL SAFETY RULE:** Be careful of electricity around railway lines. Electricity can be very dangerous and can jump up to three metres. Be aware of cables as they run under the ground and beside the track.

**1** From Wirksworth Train Station head up North End concessionary path opposite the museum. Follow the path and pass Wirksworth Church of England Infant School on your left.

**2** Just past the school continue to walk straight ahead to the top of the short steep drive which will take you to North End.



Being outside with nature is just amazing. It gives you time to relax, a chance to observe all the wonderful things around you and notice the changing of the seasons. Turn to the back page of this booklet to find a

## NATURE CHALLENGE

**CREPUSCULAR** (pronounced crepp-usk-u-lah) is an English word

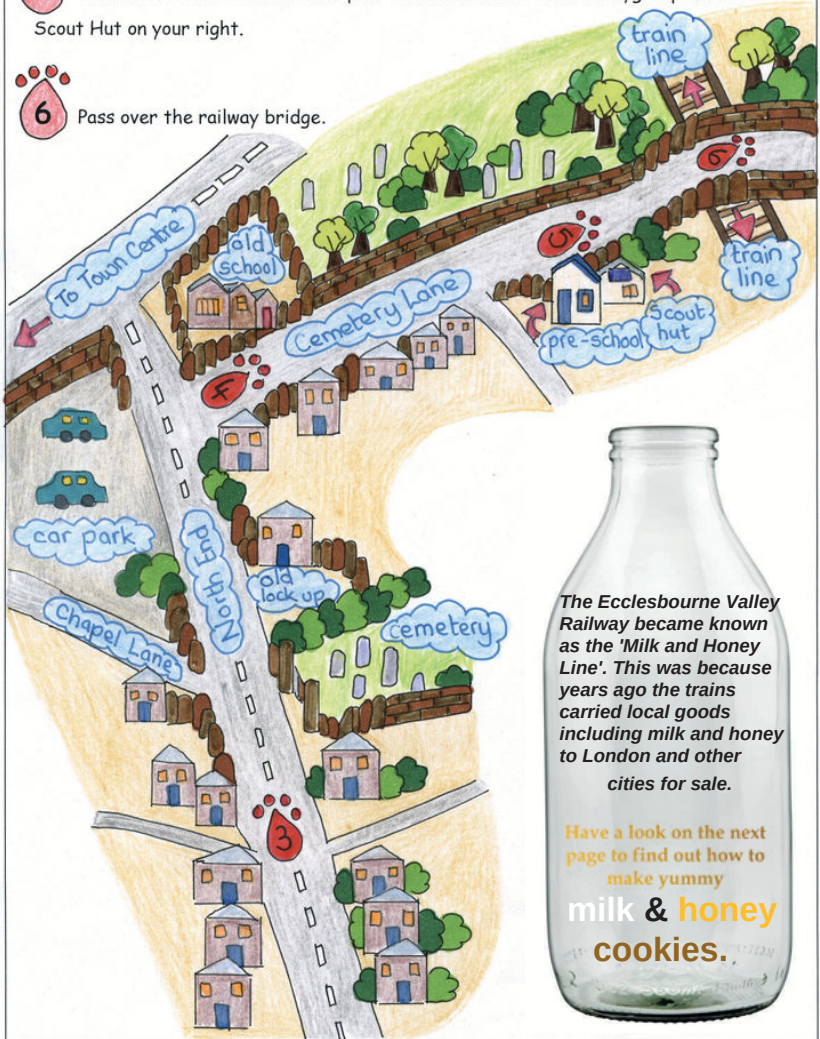




**RAIL SAFETY RULE:** Never fly kites or balloons around railway lines.  
This is because they can get caught in the electrical cables.

CREPUSCULAR animals like owls or rats can often be seen in the time between day and night. This is the spell prior to the sun disappearing when the sky is **pinky orange** in colour before the darkness of night takes over.

- 3 At the top of the drive turn right on to North End.
- 4 Walk up North End to the road junction. At the road junction turn sharp right to head down Cemetery Lane.
- 5 Continue to walk down the lane past Wirksworth Pre-School Playgroup and the Scout Hut on your right.
- 6 Pass over the railway bridge.



The Ecclesbourne Valley Railway became known as the 'Milk and Honey Line'. This was because years ago the trains carried local goods including milk and honey to London and other cities for sale.

Have a look on the next page to find out how to make yummy **milk & honey cookies.**



**RAIL SAFETY RULE:** When on a train platform always stand behind the yellow line waiting for the train. Never try to stop a train door from closing by putting your hand between the doors.

Have a go at baking some

# MILK & HONEY COOKIES

## What you need



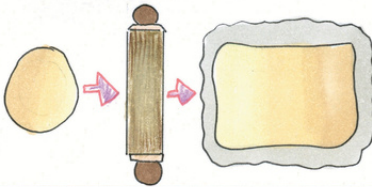
Preheat the oven to gas mark 4, 180°C or 350°F

## What to do

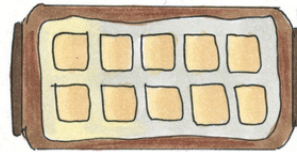
**1** In a large bowl mix the butter with the sugar until it is pale and creamy. Stir in the honey, then the egg yolk. Add the ginger, flour and baking powder and mix well.



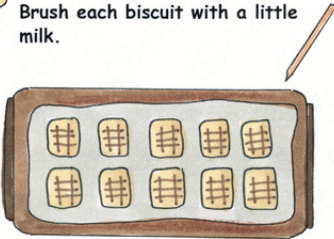
**2** Using your fingers shape the dough into a ball. Roll the dough in a little flour and using a rolling pin roll the mixture out until it is about 1/2cm thick and cut out rectangle shapes.



**3** Gently transfer your biscuits onto a baking tray covered with a sheet of baking paper. Space the biscuits out so they do not end up sticking together.



**4** With a cocktail stick mark train track shapes on each biscuit. Brush each biscuit with a little milk.



**5** Bake the biscuits in the oven for 12–15 minutes until golden brown. Cool on a wire tray before sharing and eating your yummy biscuits.



**SMEUSE** (pronounced smee-ooze)  
is an English word



**RAIL SAFETY RULE:** Stay off the tracks. If you accidentally drop an object on the tracks don't pick it up yourself. Never put objects on the track.

If a small animal uses the same path through a hedge or wall it creates a **SMUSE** which is a small gap.



7 Just after crossing the railway bridge pass through the gate.



8 Turn left and follow the public footpath to Bolehill passing through the old stone gateposts.



9 Continue to follow the path slightly uphill until you begin reach the houses of Little Bolehill.

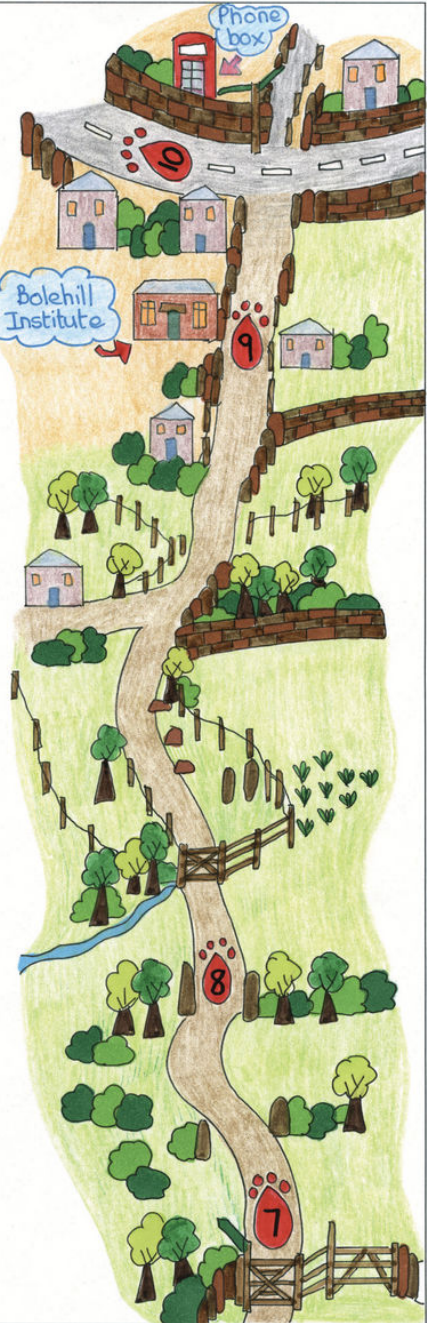


10 Walk past Bolehill Institute on your left and very shortly after as you see the red telephone box in front of you turn immediately left on the Bolehill Road.

The dragon on the Ecclesbourne Valley Railway logo like the one on the front of this booklet is called a 'Wyvern'. A Wyvern is a legendary creature that is very similar to a dragon but has many different characteristics, both physically and in terms of abilities and behaviour.



Can you design your own Wyvern dragon?  
What colour will it be? What characteristics will it have? How big will it be?



**RAIL SAFETY RULE:** Always be kind and polite to railway staff and other people at the train station.

11

Follow the road winding your way between the houses.

12

Turn left to walk down New Road. As you walk down the road make sure you stay on the pavement.

13

When eventually you arrive at the main road junction turn right on the pavement. After a very short distance just past the bus stop carefully cross the road and follow the public footpath sign between two houses.



## ARE YOU A RAIL SAFETY CHAMPION

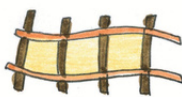
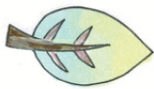
Railways and trains may seem exciting and fun but it's important to remember that railways can be dangerous places if you are not careful.

Turn over and play the 'Tracks, Trails and Trains' game to see if you can become the ultimate train safety champion.

To help you play the game around the top of some of the pages in this booklet in **red writing** are some important rail safety rules, you will need to try and read and remember these rules before playing the game.

**SMULTRONSTÄLLE** (pronounced smul-tron-stellar) is a Swedish word

In Sweden the word SMULTRONSTÄLLE is used to describe a place outdoors where people go to be happy.



14 After a short distance pass through the gate at the top of the lane to enter the National Stone Centre.



15 Stick to the left hand path which will lead you to the Millenium Wall. Follow the path downhill next to the Millenium wall.



16 As the Millenium Wall comes to an end head for the stone pillar in front of you.



### Life on the reef

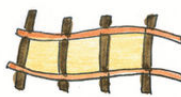
Just imagine where you are right now used to be a reef mound full of life 330 million years ago.

There are millions of fossilised sea creatures all around you.

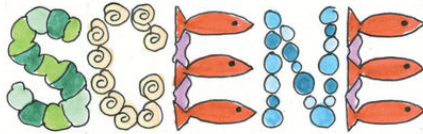
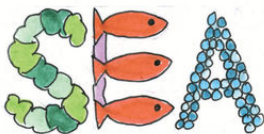
Have a look on the next page to find out how to make your own underwater sea scene.







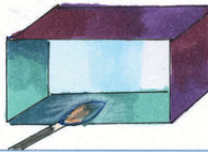
# HERE IS HOW TO MAKE YOUR OWN UNDERWATER



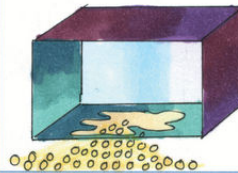
## YOU WILL NEED

- Empty shoe box
- Foil
- Light and dark blue paint
- Sand
- PVA glue and sticky tape
- Green tissue paper
- White card
- Felt pens
- Ribbon

**1** Glue foil around the outside of the shoe box and paint inside the box with a mixture of light and dark blue paint.



**2** Stand the box up, spread PVA glue on the base and sprinkle with sand.



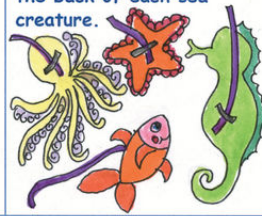
**3** Cut out seaweed shapes from the tissue paper and stick on the back of the box



**4** On the white card draw a few of your favourite sea creatures, cut them out and colour them in on both sides.



**5** With sticky tape fasten a piece of ribbon on the back of each sea creature.



**6** Stick the other end of the ribbon to the top of the box.



**7** To finish your wonderful sea scene you could try some of these ideas.



**VOLTA** (pronounced vol-tar) is a Greek word



# TRACKS, TRAILS AND TRAINS GAME



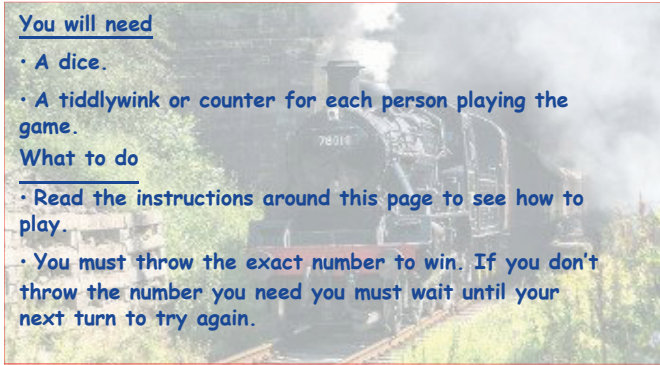
The first person to land exactly on the last carriage is the winner.

## You will need

- A dice.
- A tiddlywink or counter for each person playing the game.

## What to do

- Read the instructions around this page to see how to play.
- You must throw the exact number to win. If you don't throw the number you need you must wait until your next turn to try again.



## START CARRIAGE



### Did you know...

Electricity moves quickly and can jump up to 3 metres

10



Move forward 1 space to read the rest of this 'did you know' fact

Lots of trains use electricity and it travels through power lines above or below railway tracks.

9



8

Move forward 1 space

You stood safely behind the yellow line while waiting for the train to arrive.

12

13

## END CARRIAGE

WELL DONE

You are a rail safety champion

21

Move forward 1 space

You reminded your friend to put their rubbish in the bin and not drop it on the train line.

20



Mov

You men

1

If you land on a carriage with an action in it, you



# Place your counters on the start carriage



Take it in turns to throw the dice and move along the number of carriages shown on the dice

GE

## Did you know...

A train weighs 400 tonnes which is the same as about 80 elephants.

2



## Move forward 2 spaces

You went to the park to play safely with your friends away from the railway track.

3



4

## Did you know...

A Great British train is faster than a cheetah which is the fastest animal on earth.

7



6

5



## Did you know...

This symbol warns people of electricity danger.

14

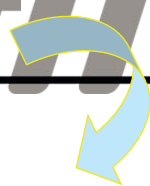


15

## Move forward 1 space

You flew your kite safely well away from the railway lines.

16



## Move forward 2 spaces

They were very polite to a number of railway staff.

9



## Did you know...

Trains can't just stop suddenly, it takes up to the length of 20 football pitches to stop.

18

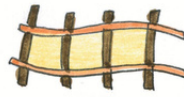
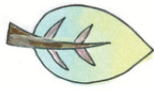


17

You must do what it says to keep yourself safe.



A VOLTA in Greece is a gentle walk when people take time to enjoy nature and feel relaxed



**17** Follow the path heading downhill to the left of the pillar.

**18** After a short distance at the fork in the path go left heading down toward Ravenstor Station and Wirksworth.

**19** Wind your way down through the woods until eventually you will arrive at the bridge.

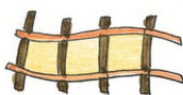
**20** Your walk continues under the bridge down Old Lane but if you have time take a few minutes to investigate Ravenstor Station.



### Ravenstor Station

Ravenstor station was built to serve the many surrounding quarries. The line never originally carried passengers but in 2005 Ecclesbourne Valley Railway opened a small station here creating a brand new passenger railway





How to make your very own piece of colourful

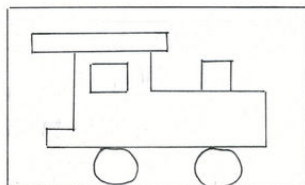
# TRAIN ART

## What you need

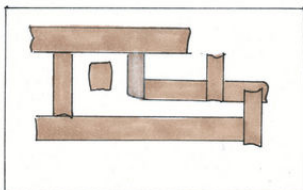
- # A3 piece of thick white card
- # Masking tape
- # Wax crayons or oil pastels
- # Thick black marker pen
- # Pencil
- # Eraser
- # Ribbon

## What to do

- #1** With the pencil draw a simple train outline on the white card.



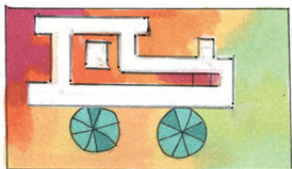
- #2** Cover the pencil lines with masking tape. Don't put any masking tape on the wheels.



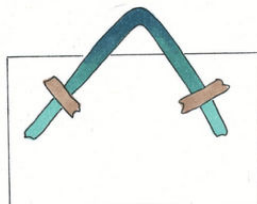
- #3** Using the crayons or pastels colour over the piece of card. You could colour a separate design in the wheels. Don't worry if you colour over the masking tape.



- #4** Carefully peel off the masking tape and using the eraser rub out the pencil lines you drew originally. Go over the wheel outlines with black marker pen.



- #5** Using a piece of masking tape fasten the ribbon to the back of your train art so it can be hung on the wall.



**TÜKÖRSIMA** (pronounced took-er shee-ma) is a Hungarian word



# PUZZLE PAGE



In Hungary the word TŰKÖRSIAMA is used to describe calm pools of water.



21 Walk under the bridge and follow the lane all the way downhill until you reach the main road.



22 When you reach the main road carefully cross over and turn right. Stay on the footpath at the side of the road.



23 Walk past Fanny Shaw's play park on your left and you will soon arrive back at the top of Cemetery Lane and North End where you started your walk earlier.



24 Retrace your steps back down North End to Wirksworth Station.



## Wirksworth Heritage Centre

My name is Woolly.  
You can colour me in



Woolly is a woolly rhino and he was brought to the Heritage Centre so you can see how big a woolly rhino really was.

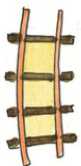
43,000 years ago Woolly's ancestor was roaming around Wirksworth.

His skeleton was found in a local cave and he was one of the most complete woolly rhino skeletons in the world!

You can find out more about Woolly and the history of Wirksworth by visiting the museum inside the Heritage Centre at St. John's Street in the town.



[www.wirksworthheritage.co.uk](http://www.wirksworthheritage.co.uk)



Around the edge of this page are images of the leaves which you had to find in the wordsearch. Can you match the images to the leaf names?

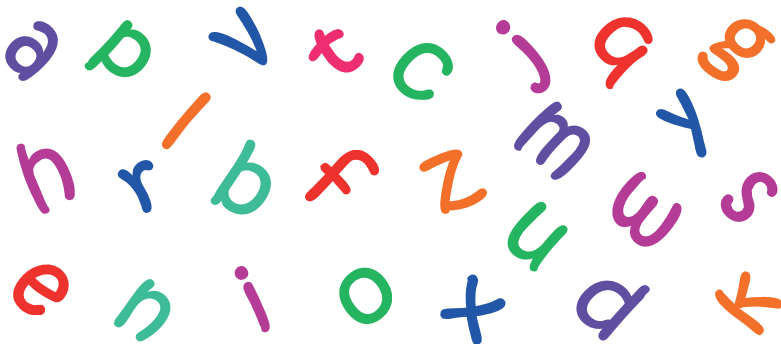
# LEAF HUNT

How many of these leaf names can you find in the wordsearch?

field maple birch sycamore rowan hazel  
 elder beech alder horse chestnut  
 holly holly oak hawthorn ash

a	r	o	h	o	l	l	y	e	y	d
y	b	r	o	w	a	n	s	n	x	p
z	t	w	r	e	e	l	o	n	x	h
u	d	k	s	i	v	s	a	s	h	p
f	b	e	e	c	h	k	k	m	a	j
b	s	y	c	a	m	o	r	e	z	f
r	o	q	h	d	a	g	j	t	e	o
z	f	i	e	l	d	m	a	p	l	e
b	q	p	s	w	q	a	m	g	a	u
i	t	s	t	i	e	l	d	e	r	k
r	h	f	n	l	b	d	m	h	n	g
c	c	r	u	c	v	e	u	j	i	l
h	a	w	t	h	o	r	n	v	m	c

As you walk along can you see anything beginning with the letters below.



**STJERNEKLART** (pronounced styern-er-klart) is a Norwegian word



In Norway **STYJERNEKLART** means starlit and describes the amazing beauty when you look in to a black night sky which is illuminated by more stars than you can count.

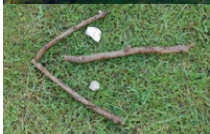
# NATURE CHALLENGE

Being outside and with **nature** is just **amazing** .  
Try to have a go at these fun and relaxing outdoor activities.



Use nature to tell a story to your family or friends.  
You could look for dinosaurs in the woods, pretend puddles are dinosaur footprints and pine cones are their eggs.

All trees have a story to tell. You could make up a story about why are they crooked, split or tall.



Make a nature trail—use twigs, pine cones or leaves to direct your friends or family on a little walk and you could even hide a surprise treat at the end.



Look up to the sky and search for shapes in the clouds or spot birds circling above you.



Next time it rains put your waterproof coat and wellies on, have a really good dance in the rain and splash in the puddles.



Pack some crayons and a few pieces of paper and make some nature rubbings of fun textures you find on your walk.

Try leaves, twigs, bark etc.



Get close to a garden snail, watch it move its head and tentacles towards you as it sense you in its 'space'.

Take a piece of paper and a pencil outside and have a go at sketching a plant, seed or feather.



Create a piece of artwork next to a bench or path using leaves, twigs, pine cones or feathers or whatever you can find. Leave it there and it will make a nice surprise for the next person who passes by.

