

Cromford Station building is rather special, your parents may recognise it, as it featured on the record sleeve of the single 'Some Might Say' by Oasis. The lyrics of which include "I've been standing at the station in need of education".



### TAKE A WALK

It's a 10 minute walk from the station to Scarthin Rock and Cromford Mill, birthplace of the modern factory. Look at the murals in St Mary's Church (if open). Climb the rock if you're feeling fit and take a stroll around the village. Canal walks (or a boat trip!) start at Cromford Wharf. To Aqueduct cottage on foot takes about 30 mins each way.



NICELY DONE SIR

### BECOME A GONGOOZLER

The name given to an idle spectator of the activities on canals. Said to originate from Lincolnshire dialect words: 'gawn' and 'gooze' meaning to stare or gape. It is now a pastime enjoyed by many.

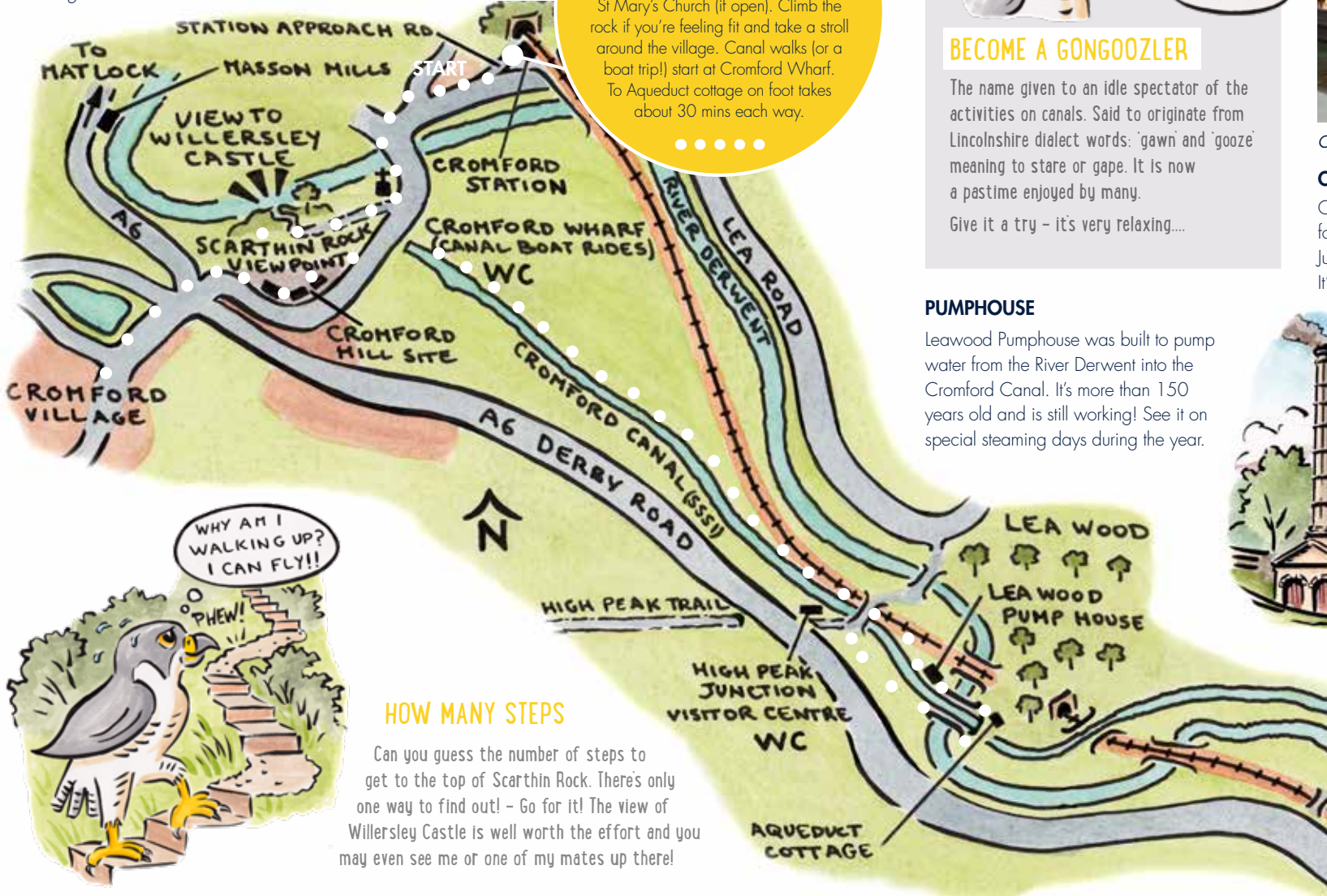
Give it a try - it's very relaxing...



Canal Boat Photo by: Philip Rutt

### CROMFORD CANAL

Once an important transport link to the Mills is now a haven for wildlife. The walk from Cromford Wharf to High Peak Junction Visitor Centre takes about half an hour (1.5 miles). It's pushchair and wheelchair friendly.



### PUMPHOUSE

Leawood Pumphouse was built to pump water from the River Derwent into the Cromford Canal. It's more than 150 years old and is still working! See it on special steaming days during the year.



WHY AM I WALKING UP? I CAN FLY!!

PHEW!

### HOW MANY STEPS

Can you guess the number of steps to get to the top of Scarthin Rock. There's only one way to find out! - Go for it! The view of Willersley Castle is well worth the effort and you may even see me or one of my mates up there!

DERBYSHIRE COUNTY COUNCIL

### CROMFORD CANAL

Opened 1794

Engineered by William Jessop and Benjamin Outram

It ran 14.5 miles from Cromford to Langley Mill and played a pivotal role in the transformation of the Derwent Valley

Water voles live along the canal banks  
Photo by: Shirley Freeman

